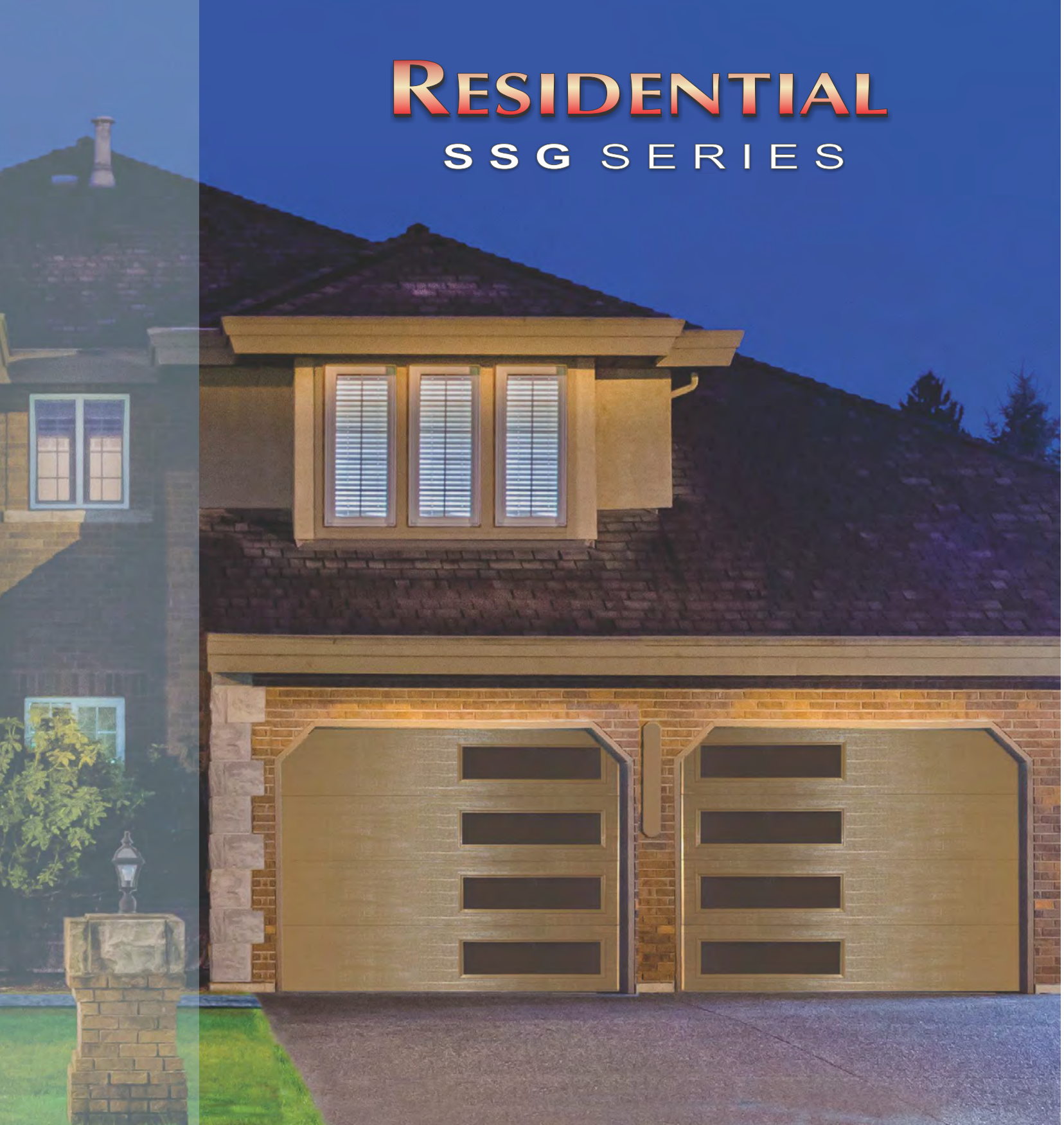


# RESIDENTIAL

## SSG SERIES



 **IDA**  
International Door Association  
Enhancing the Value and Proficiency of  
Door & Access Systems Dealers

Member  
 **DASMA**  
Door & Access Systems  
Manufacturers Association  
International



**Mid-America Door**<sup>®</sup>

MIDAMERICADOOR.COM

# RESIDENTIAL SSG SERIES

Mid-America Door's Residential SSG Series features horizontal micro grooves, and wood grain design, for that clean contemporary look.

## STANDARDS

- Wood grain embossed design.
- Sections feature nominal 2" thickness, manufactured using roll-formed nominal 25 gauge steel. SSG has a continuous sculpted polystyrene board, bonded between the exterior steel face and flush embossed steel interior. Sections will have a tongue & groove meeting rail to provide a weather tight seal between sections.
- Commercial grade aluminum retainer with thick vinyl weatherstrip, which runs the entire length of the bottom to conform with the floor and seal out the elements.
- Rugged hot dipped galvanized tracks, brackets, wide body hinges, plus torsion or extension springs deliver years of trouble-free performance and continuous smooth openings and closings.
- Inside slide lock.
- SSG backed by a limited lifetime warranty against splitting, cracking and rust through. EXCEPTION: Doors installed within 2 miles of coastal salt water.



**Mid-America Door®**

MIDAMERICADOOR.COM

Mid-America Door Co.  
1001 West Hartford Ponca City, OK 74601  
(800) 364-3667

## AVAILABLE COLORS

Mid-America Door offers garage door models in the following colors:



White



Sandstone



Sahara



Almond



Brown



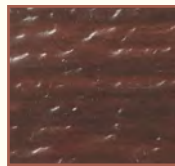
Terrastone



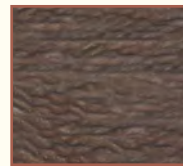
Country Red



Black Ice

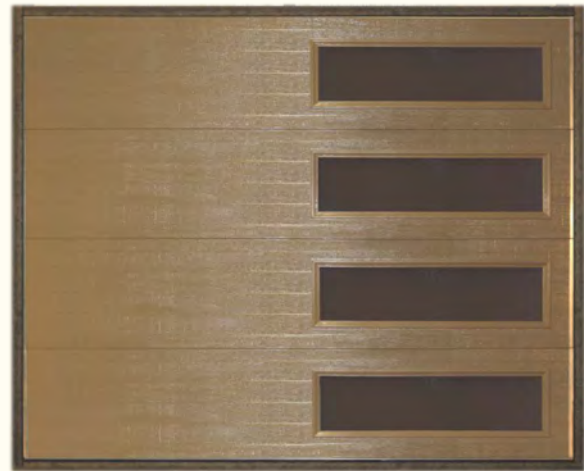


Cherry



Dark Walnut

Please see your Mid-America Door distributor for an exact color sample.



SSG is available with multiple window options.

**STANDARD HEIGHTS - 6'6" / 7' / 7'6" / 8'**

## INSULATION

SSG features a 2" thick polystyrene insulation, pressure bonded between 2 sheets of steel for superior energy efficiency and sound resistance.

